

A STRATEGIC ECONOMIC DEVELOPMENT POLICY FOR MONTGOMERY COUNTY, PENNSYLVANIA: RECOMMENDATIONS TO COUNTY COMMISSIONERS

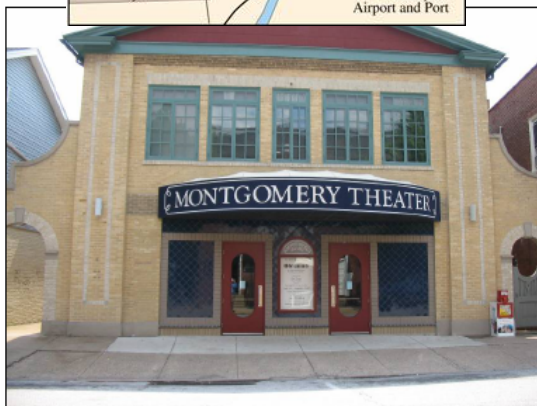


CLIENT

CLIENT

Montgomery County
One Montgomery Plaza, Suite 800
Norristown, PA 19404-0311

December 2008



Econsult Corporation was retained by Montgomery County, Pennsylvania in order to assist County officials in developing a cohesive and comprehensive strategic economic development policy. A central part of this effort was Econsult's ongoing work with the Montgomery County Strategic Economic Development Policy Task Force, formed in April 2008 by the Montgomery County Commissioners with the directive to develop a County-wide strategic economic development policy. Over the course of the project, Econsult addressed four central tasks, listed below:

- Identifying priority economic development issues throughout the County
- Establishing existing economic development programs and organizations within the County and/or at its disposal
- Identifying gaps and needs within the existing economic development structure and programming
- Proposing funding and policy recommendations

Working with County officials, the Task Force, and other stakeholder groups, Econsult developed a set of targeted policy recommendations which fell into three distinct categories: funding, overall coordination, and programming. They responded to and addressed a range of gaps and needs in the County's existing economic development structure, which were identified with the Task Force as part of the policy development process. These recommendations were compiled into a final report which was presented to and ultimately adopted by County Commissioners and are now being examined further for implementation by the County.